



Cygnet



ASTON MARTIN

Cygnus



ASTON MARTIN





ASTON MARTIN

Aston Martin, a name built on heritage and innovation, tradition and inspiration.

Elegant and distinctive, individual and practical, The Aston Martin Cygnet is the luxury solution to urban mobility.

A new city car built with the timeless values you have come to expect from Aston Martin. Hand-crafted with the highest quality materials, and painstaking attention to detail, Cygnet is bespoke, exclusive and in a class of its own.

Cygnet

Tailor-Fit for the city



Aston Martin Cygnet
Tailor-Fit

Cygnet is for city living, for dashing to the shops, to a meeting, or for an espresso at your favourite brasserie. Stylish, sophisticated and intelligent. It is a small car for the discerning driver. An Aston Martin fit for the city.









*It's time to
think differently*

Cygnit is agile and takes up less
space, creating more time for you.
It is versatile, allowing you to
do the things you want.



Cygnet is a genuine solution for luxurious urban mobility, able to slip easily and unobtrusively into the city. A natural extension to Aston Martin's range of acclaimed luxury sports cars. An Aston Martin that gives you access to the city like never before.

Luxury and quality
Crafted for the city





Hand-crafted for the city.
Cygnet is the luxury small
car that adapts to your needs,
made with the highest
quality materials.
And like every Aston Martin,
it is bespoke and can be
uniquely suited to match
your style and personality.



Design Good design is not just about form, it is also about function.

interiors

- | Full-grain leather interior from the Aston Martin range
- | Hand stitched seating for four
- | Machined aluminium features
- | Optional colours, materials and finishes
- | Alcantara headlining
- | Nine airbags
- | Bespoke leather glovebox bag



Spicy Red leather with Quilted Obsidian Black leather door and seat inner finish | 6-speed manual transmission

Cygnus is small yet can carry up to four people.

Alternatively, the 50:50 split rear folding seats can be used to increase luggage capacity as desired.

- | Automatic temperature control
- | Heated front seats
- | Keyless entry and start
- | Integrated storage solutions
- | 50/50 split rear seats with ISOFIX
- | Portable Satellite Navigation system with integrated Bluetooth®
- | Integrated audio system with steering wheel mounted controls
- | Auxiliary audio input socket



Kestrel Tan leather with Obsidian Black Plissé Alcantara door and seat inner finish



Dark Chrome with Piano Black interior detailing | Continuously Variable Transmission (CVT)



Cream Truffle leather | Satin Chrome with Iridium interior detailing





Obsidian Black leather with Quilted Obsidian Black leather door and seat inner finish



Satin Chrome with Iridium interior detailing | Continuously Variable Transmission (CVT)



Variety
A matter of choice

It is a question of taste. Cygnet is available in the full selection of Aston Martin's paint and trim range.

Choose your favourite colours and combinations from either our range or infinite palette, with so much variety, you can ensure that Cygnet is an individual expression of your taste and desires. The perfect choice.





| Silver Fox paint |



| Red Lion paint |



| Yellow Kangaroo paint |



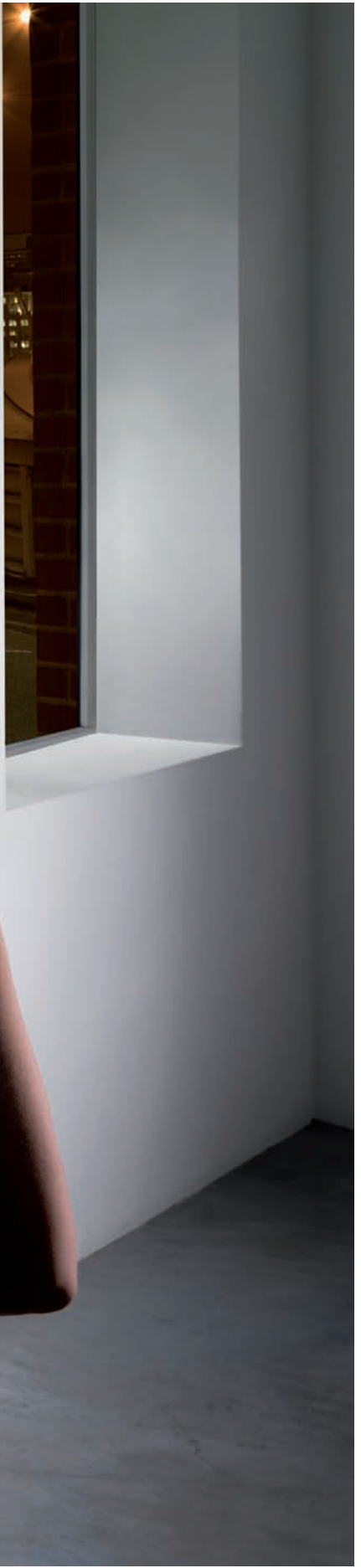
| Grey Bull paint |



The Aston Martin Cygnet continues the company's tradition of emotionally engaging design through our philosophy of style, craftsmanship and attention to detail. This is allied to exquisite form and surface language, resulting in a car that is elegant yet perfectly proportioned for the city. Beauty - it is at the heart of everything we do.

Pure lines

Beauty in the city





It is a statement, an intelligent choice.
It is an Aston Martin.

Cygnets bears the unmistakable design cues
synonymous with the marque:

| The Grille | The Side Strake | The Badge

| With 16" 8-spoke or optional 16-spoke alloy silver or
graphite painted wheels with a diamond turned finish.

All signifying heritage, luxury and exclusivity.

*It's more
than a car*



Red Lion paint | 16" 16 - spoke graphite painted diamond turned alloy wheels



Body coloured bonnet louvre (also available in Gloss Black or Grey Chrome)



Gloss Black Diffuser blade (Also available in chosen body colour)

Exterior design

- | Two door body style with full width tailgate
- | Exterior paint colours from the Aston Martin range
- | Exterior body parts with traditional Aston Martin design cues
- | Metal side strakes
- | Aluminium front grilles
- | 16" 8-spoke or 16-spoke alloy road wheels
- | Four wheel disc brakes with Vehicle Stability Control, ABS, Electronic Brake Distribution and Electronic Brake Assist
- | Heated and retractable exterior mirrors
- | Rear spoiler and diffuser blade
- | LED tail lamps
- | Rear screen wash and wipe



Grey Bull paint | 16" 8 - spoke graphite painted diamond turned alloy wheels



It's about security

The Cygnet comes with a full range of sophisticated and intelligent safety features rarely seen in other commuter cars.

Systems that are designed to protect the driver, passengers and pedestrians including:

- | Nine SRS airbags
- | Safety head restraints
- | Front seat pre-tensioners and force-limiters
- | ABS, integrated with Emergency Brake Assist (EBA) and Electronic Brakeforce Distribution (EBD)
- | Vehicle Stability Control (VSC+) combined with traction control (TRC) for greater road adhesion
- | Auto dimming rear view mirror
- | Rain-sensing wipers and dusk-sensing headlamps
- | Rear ISOFIX anchor points
- | High-strength steel body



Responsibility

A good reason

Cygnnet has carbon emissions of just 116 g/km and fuel economy of 56.5 mpg* (5 l/100 km*). With these impressive figures, Cygnnet is an intelligent choice for the conscientious individual.

*manual transmission EU combined test cycle



Mobility

An edge in the city

It is about freedom.
Cygnet gives you access to the city,
the luxury solution to urban mobility.
Safe, compact, comfortable and refined,
enjoy your exhilarating sense of freedom.





Yellow Kangaroo paint

Paint colour range

Cygnet is available in a wide range of paint colours from the following categories.

Standard Cygnet Paint Colours

Black Bear* | Silver Jubilee* | White Horse
Red Lion* | Yellow Kangaroo* | Grey Bull*
Blue Anchor* | Silver Fox*

Optional Paint Colours

| All Sports Car Paint Colours
| All Special/DBS Aston Martin colours
| All previous Aston Martin colours,
other manufacturers' special colours
and match to sample for an infinite palate

*Metallic Paint



| Black Bear



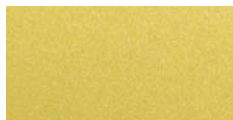
| Silver Jubilee



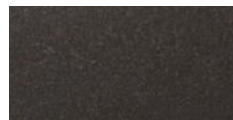
| White Horse



| Red Lion



| Yellow Kangaroo




| Grey Bull



| Blue Anchor



| Silver Fox



Cygnets comes with the full range of Aston Martin trim options. Materials and finishes such as leather, indented leather, quilted leather, Alcantara, plissé Alcantara and Glasgow fabric.

You can choose from our extensive range of leather colours to match your taste. Or you can simply bring us a sample of the colour you want and we'll match it.

Trim

interiors

Optional Leather Colours

| Out of range leather or match to sample for an infinite palate



| Obsidian Black



| Iron Ore Red



| Baltic Blue



| Phantom Grey



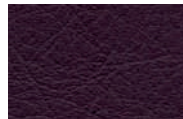
| Dark Mocha



| Chainmail Grey



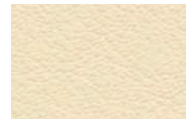
| Spicy Red



| Deep Purple



| Falcon Grey



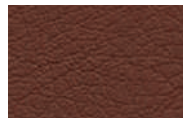
| Cream Truffle



| Sandstorm



| Kestrel Tan



| Chestnut Tan



| Aurora Blue



| Moon Shadow



| Chancellor Red



| Sahara Tan



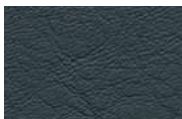
| Madagascar Orange



| Tuscan Tan



| Bitter Chocolate



| Blue Haze



| Spectral Blue



| Eiffel Green



| Lords Red



| Parliament Green

Trim *interiors*

Optional Alcantara Finishes

- | Alcantara
- | Ivory | Moon Shadow | Tailors Grey
- | Chancellor Red | Obsidian Black
- | Cirrus Grey | Light Tan | Arctic Blue
- | Blue Haze | Bitter Chocolate
- | Plissé Alcantara
- | Ivory | Chancellor Red
- | Obsidian Black | Light Tan | Cirrus Grey

Optional Leather Finishes

- | Perforated Leather
- | Quilted Leather

Optional Fabric Finish

- | Glasgow Fabric
- | Obsidian Black

Optional Alcantara Finishes



| Ivory



| Moon Shadow



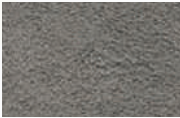
| Tailors Grey



| Chancellor Red



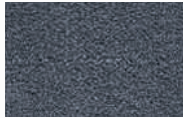
| Obsidian Black



| Cirrus Grey



| Light Tan



| Arctic Blue



| Blue Haze



| Bitter Chocolate



Plissé Alcantara | Ivory | Chancellor Red | Obsidian Black | Light Tan | Cirrus Grey

Optional Leather Finishes

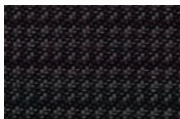


Perforated Leather |
All leather colours



Quilted Leather |
All leather colours

Optional Fabric Finish



Glasgow Fabric |
Obsidian Black

Technical

Specifications

Body

- | Two door body style with full width tailgate and 4 seats
 - | Bright Aluminium front upper and lower grilles
 - | Bright Metal side strakes with Magnum Silver mesh
 - | Bi-halogen headlights
 - | LED tail lamps
- | Rear spoiler and diffuser blade
 - | Body coloured door mirrors, heated and electrically retractable
 - | Side turn indicators on outer door mirrors
 - | Rain sensing wipers
- | Dusk sensing headlamps
 - | Front fog lamps
 - | Rear privacy glass with washer jet and wiper
 - | Rear Parking sensors
- | Rear tailgate Bright finisher

Engine

- | 1.33 litre Dual VVT-i engine
 - | 4 in line cylinders
 - | 16 Valve DOHC (Double Overhead Camshaft) chain drive
- | Electronic fuel injection
 - | Front mounted engine and differential
 - | Front-wheels drive
- | Fully catalysed stainless steel exhaust system
- | Compression ratio 11.5:1

Transmission

- | 6-speed manual (with Stop & Start technology and gear shift indicator)
 - | Optional Continuously Variable Transmission (CVT) (with Eco Driving Indicator)

Performance

- | Max Power 72 kW (97 bhp / 98 PS) at 6000 rpm
- | Max Torque 125 Nm (92 lb ft) at 4400 rpm
- | Max Speed 170 km/h (106 mph)
- | Acceleration 0-100 km/h (62 mph)
 - 11.8 seconds (6-speed manual)
 - 11.6 seconds (CVT)
- | Fuel economy
 - EU combined test cycle
 - 5 l/100km / 56.5 mpg [6-speed manual]
 - 5.2 l/100km / 54.3 mpg [CVT]
 - EU Urban test cycle
 - 5.8 l/100km / 48.7 mpg [6-speed manual]
 - 6.1 l/100km / 46.3 mpg [CVT]
 - EU Extra Urban test cycle
 - 4.5 l/100km / 62.8 mpg [6-speed manual]
 - 4.6 l/100km / 61.4 mpg [CVT]

CO2 emissions

- EU combined test cycle
 - 116 g/km [6-speed manual]
 - 120 g/km [CVT]

Suspension

- | Front MacPherson strut system
- | Rear Torsion beam

Steering

- | Rack and pinion, Servotronic speed-sensitive power-assisted steering, 3.0 turns lock-to-lock
- | Column tilt and reach adjustment

Wheels

- | 16" 8-spoke graphite painted diamond turned alloy wheels

Tyres

- | Front and Rear Bridgestone B250 175/60 R16

Brakes

- | Front ventilated brake discs 255mm diameter
- | Rear solid brake discs 259mm diameter
- | Anti-lock braking system (ABS)
- | Electronic Brakeforce Distribution (EBD)
- | Emergency Brake Assist (EBA)
- | Traction Control (TRC)
- | Vehicle Stability Control+ (VSC+)

Interior Equipment

- | Portable Satellite Navigation system with integrated Bluetooth® mobile phone connection
- | Automatic climate-controlled air conditioning
- | Hand stitched leather steering wheel with audio switches
- | Hand stitched leather gearshift knob
- | Cirrus Grey Alcantara headlining
- | 4 Piece floor mats with leather edge binding
- | Machined aluminium interior features
- | Satin Chrome with Iridium
- | Electrochromatic rear-view mirror
- | Electric Windows
- | Glovebox bag
- | Rear seat stowage tray under rear seats
- | Keyless Entry (driver and passenger doors plus boot)
- | Keyless Start
- | Multi - information display: audio, average speed, clock, outside temperature, current and average fuel consumption
- | SRS front airbags: driver and passenger
- | SRS curtain shield airbags: driver and passenger (front and rear)
- | Driver's SRS knee airbag
- | Seat cushion airbag switch-off
- | Seat belt warning: driver, passenger and rear occupants
- | Front seat belts: 3-point ELR with pre-tensioners and force - limiters
- | Rear seat belts: 3-point ELR
- | Safety Head Restraints
- | ISOFIX restraint system
- | Removable rear seat headrests
- | Rear seats 50:50 split folding

In Car Entertainment

- | Radio, CD, 6 Speakers including MP3, Windows Media Player (WMA) and MPEG (MP3) audio file compatibility
- | 3.5 mm auxiliary input socket

Dimensions

- | Length 3078 mm
- | Width 1680 mm excluding mirrors
- | Height 1500 mm
- | Wheelbase 2000 mm
- | Front and rear track 1480 mm
- | Turning Circle 4 metres (13.1 ft) kerb to kerb
- | Fuel tank capacity 32litres
- | Kerb Weight 988kg

Options

- | 16" 8-spoke alloy wheels
- | 16" 16-spoke silver painted diamond turned alloy wheels
- | 16" 16-spoke graphite painted diamond turned alloy wheels
- | Bonnet Louvre colours:
 - Gloss Black
 - Grey Chrome
- | Delete Cygnet Badge
- | Garage door opener
- | First aid kit (not available in all markets)
- | Dark Chrome with piano black interior finishes
- | Cygnet sill plaque
- | Personalised Cygnet Sill Plaque

Accessories

- | Suspension lowering kit
- | Locking wheel nuts
- | Chrome mirror caps
- | Solar panel for battery charge
- | 3.5 mm auxiliary audio connection lead
- | Garage door opener
- | Smokers' pack
- | Bill Amberg 5 piece Luggage Set; glove box bag, removable door pocket bag, holdall, garment bag, collapsible tote bag
- | Indoor car cover
- | Outdoor car cover
- | Cygnet Umbrella



ASTON MARTIN

IMPORTANT NOTICE

Pictures and Word mark

The cars illustrated in this brochure may include additional options not featured in this brochure or that are only available at extra cost.

The Bluetooth word mark and logos are owned by the Bluetooth SIG inc and any use of such marks is under license.

Updates

Aston Martin Lagonda Limited is constantly seeking ways to improve the specification, design and production of its cars and alterations take place continually. Whilst every effort is made to produce up-to-date literature, this brochure should not be regarded as an infallible guide to current products, options, accessories or specifications, nor does it constitute any offer for sale of any particular car, product, option, accessories and/or services or combination of the same.

This brochure is merely an indication of the kinds of Aston Martin products and services which may be available from time to time. The contents of this brochure represent Aston Martin Lagonda Limited's business as a whole. Text and photographs may relate to models, specifications, options, accessories and/or services that are not available for sale in some countries or which have been superceded or are otherwise no longer available.

Performance results

Performance results, fuel consumption figures and CO2 emissions data quoted in this brochure are obtained under controlled test conditions (in accordance with applicable regulations) and may vary depending on the specification of the particular car, road and environmental conditions and driving style. Tyre choice may also impact on performance results, fuel consumption, CO2 emissions, ride comfort and handling.

Published figures should be used for comparison purposes only and verification should not be attempted on public roads. No guarantee is given express or implied of performance results, fuel consumption or CO2 emissions.

Aston Martin Lagonda Limited strongly urges that all speed laws be obeyed and that safety belts be worn at all times.

The weight of the car will influence the level of CO2 emitted and as a result, cars with higher levels of specification and factory fit options may emit higher levels of CO2. However, Vehicle Excise Duty is charged according to the weight of and CO2 emissions of the standard car, as published in this brochure.

All petrol engines are fitted with a catalytic converter.

Distributors and dealers

Distributors and dealers are not agents of Aston Martin Lagonda Limited and have absolutely no authority to bind Aston Martin Lagonda Limited by any express or implied undertaking or representation. Sales by dealers or agents are subject to their terms and conditions of sale.

Company Details

ASTON MARTIN LAGONDA LIMITED (COMPANY NUMBER 01199255) HAS ITS REGISTERED OFFICE AT BANBURY ROAD, GAYDON, WARWICKSHIRE, CV35 0DB, ENGLAND. TELEPHONE +44(0)1926 644644. FACSIMILIE +44 (0)1926 644333. VAT NUMBER 904 447 237. WWW.ASTONMARTIN.COM

PART NO: 704945 ENG May 2011

