

2022 RENEGADE®

Jeep®



EXPAND YOUR UNIVERSE

Everywhere is an adventure with Jeep® Renegade®, with its gift for efficient travel combined with legendary Jeep® Brand capability. Renegade is designed for those who yearn to travel overground yet play under the radar, where big dreams merge into an endless sun-drenched highway. The world is yours to explore with purpose and create a pathway all your own.



Limited in Black

MEMORABLE ADVENTURES
ARE STANDARD FARE



DRAMATIC STYLE

ROAD TRIPS ARE ALWAYS EXCITING, just like the dramatic cabin design offered in Jeep® Renegade® Limited. This contemporary, standard color palette enhances the cabin's spacious interior, where passengers have plenty of wiggle room to spread out and relax.

- 1. Limited in Alpine White
- 2. Limited with Black / Ski Grey leather-trimmed seating





Limited with Black / Ski Grey leather-trimmed seating, tonal accent stitching and Grillz interior accents

ENGAGE THE SENSES

JEEP® RENEGADE® LIMITED INTERIOR APPEALS TO YOUR APPRECIATION OF DESIGN AND DETAILS with its clean, sculpted forms. Grillz bezels with chrome accents add upscale distinction. Standard LED ambient lighting sets an elegant tone. Drivers enjoy quick relief from the cold after taking hold of the heated steering wheel and relaxing in heated front seats, both standard on Limited. Fingertip controls on the steering wheel help keep eyes on the road while adjustments are made to entertainment and communication systems, vehicle speed, the standard 7-inch full-color Driver Information Display and more. Two USB ports,^{1*} a 12-volt outlet, an auxiliary port and a 115-volt auxiliary power outlet help devices, computers, phones and tablets stay powered up and in play. Apple CarPlay^{®2} support and Android Auto^{™3} compatibility are standard on every Renegade[®] model.

*A note about this brochure: all disclosures can be found on the last page.

EYES ON THE WORLD



SEE MORE OF THE WORLD and go from urban adventures to off-road discoveries with the unique comforts and powerful capabilities found in Jeep® Renegade®. Renegade arrives with authentic Jeep® Brand DNA engineered throughout. Standard safety and security systems are included in every trim level, including Blind Spot Monitoring⁴ and Rear Cross-Path Detection⁵ Systems and LaneSense® Lane Departure Warning with Lane Keep Assist.⁶ Two available 4x4 systems offer dependable all-weather fortitude to keep you moving in challenging conditions, while the rear-axle disconnect works intuitively to optimize efficiencies. World-class driving dynamics, including independent front and rear suspensions with Frequency Selective Damping (FSD) shocks, help to deliver a smooth, controlled ride experienced within a cabin that's designed with the tech-savvy in mind.



Limited in Alpine White

DRIVE SMART

Apple CarPlay^{®2} lets you connect your iPhone[®] with your vehicle's Uconnect[®] system, conveniently allowing you to place your favorite apps front and center on the system's screen. You can put down your iPhone and use the Uconnect touchscreen to access your data and fully integrate with the system's robust functionality. Standard.

The standard Uconnect[®] 4C NAV radio, with its large 8.4-inch full-color touchscreen, uses Apple CarPlay^{®2} and Android Auto^{™3}, making it easy to access your apps and data.

8.4-inch touchscreen shown with Apple CarPlay²



The available 506-watt, nine-speaker Premium Audio System, with its booming 6.5-inch subwoofer, is situated in the rear cargo area, enhancing your listening experience when it perfectly merges with all eight selectively placed speakers.

Studio-quality sound fills your cabin



Conveniently located front, center and rear, eight cup holders help keep items accessible and tidy when equipped with the 40 / 20 / 40 split-folding rear seats. The front console also offers a special slot that's perfect for a phone or small tablet.

Eight cup holders



JEEP® RENEGADE® TRAILHAWK® SEATS FIVE COMFORTABLY, with a spacious cabin and a wide range of fine-tuned standard features. It merges a sporty interior design with an 8-way power driver's seat with 2-way power lumbar adjust, heated leather-wrapped steering wheel and heated front seats, 40/20/40 split-folding rear seats with a pass-through to the cargo area, rearview auto-dimming mirror, all-season floor mats and more.

Trailhawk® with available Black leather-trimmed seating and Ruby Red accent stitching and interior accents

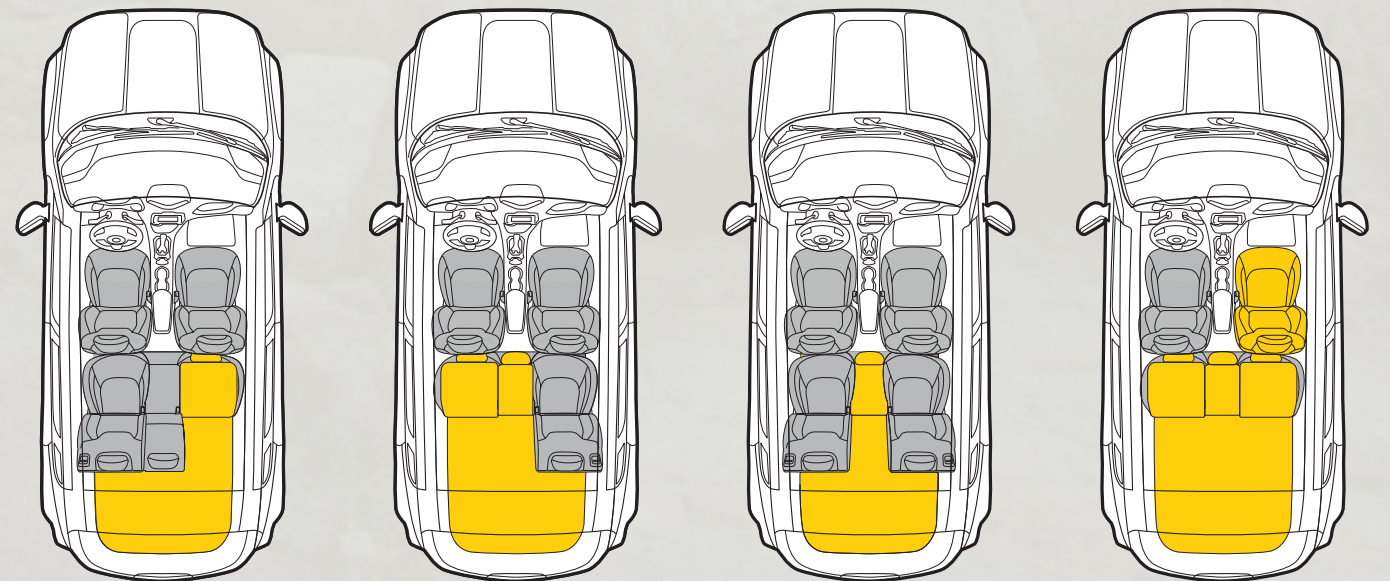


Trailhawk® in Colorado Red
Properly secure all cargo

ACCOMMODATE LIFE

INNER VERSATILITY Being practical can also be fun, and with its functional interior features, Jeep® Renegade® is fully prepared. Its interior works hard to make room for traveling with an available height-adjustable rear cargo floor and a standard fold-forward front-passenger seat. Available ambient LED interior lighting helps you see where items are stored while setting the mood for fun.

THE 60/40 OR AVAILABLE 40/20/40 SPLIT-FOLDING REAR SEATS WITH PASS-THROUGH accommodate all kinds of cargo and passenger configurations. Bring any combination of people, pets and luggage. Then, head for parts known, unknown and all points in between.



HELPFUL ARRANGEMENTS


DESIGNED TO ADJUST to your cargo-carrying needs, you're able to load up for big trips, whether they're to the corner grocery store or to your favorite camping spot. A generous rear cargo area offers up to 50.8 cu ft of space with the rear seat folded down for a full interior volume of 118.6 cu ft.



Adjustable cargo floor shown raised for easy slide-in loading



Lower the floor to gain additional space to accommodate taller items



The optional Sun, Sound and Wheel Group on Limited models adds popular features all at once, including the nine-speaker Premium Audio System, 19-inch Diamond-Cut aluminum wheels and optimal fresh-air delivery with the Dual-Pane Panoramic Power Sunroof.

The standard leather-wrapped heated steering wheel offers cold-weather comfort in Jeep® Renegade® Limited and Trailhawk®.

Exceptionally cushioned seats are offered with available premium leather trim in attractive contrasting colors.

THE ALL-NEW JEEP® AIR FILTRATION SYSTEM

We have enhanced the air filtration system in Jeep® Renegade® to provide filtered air for you and your family. The all-new Jeep Air Filtration System filters 95 percent of air particulates while separating out pollen, allergens and bacteria, making it the cleanest cabin air ever in a Renegade. Standard.

DATA-DRIVEN

A LARGE, 7-INCH FULL-COLOR DRIVER INFORMATION DISPLAY sits front and center on the dashboard — a standard feature on Jeep® Trailhawk®, Limited and Latitude models. It provides all kinds of information that drivers will find useful, including operations of safety, security and performance features, vehicle stats and much more. The 3.5-inch monochrome display is standard on Sport models.





IN TOUCH WITH IT ALL

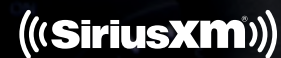
THE UCONNECT® 4C NAV RADIO includes an 8.4-inch full-color touchscreen that glows with crisp definition. Intuitive to use, the system lets you fully integrate your smartphone with Apple CarPlay®² and Android Auto,^{TM3} while a full menu of SiriusXM GuardianTM (12-month trial) connected services⁷ is yours to explore. This premium navigation system shows you the way to adventure, including route options and landmarks that let you take the long road to discovery. Standard on all Jeep® Renegade® models.

Limited with Black leather-trimmed seating



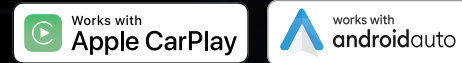
SIRIUSXM® RADIO⁸

Tune in and travel well. SiriusXM^{®8} connects you with the ultimate entertainment experience, including over 165 channels of commercial-free music, plus sports, news, talk and comedy. 6-month trial. Standard.



PHONE / TEXT

Pair up to eight phones, make calls, use voice commands to hear and respond to texts,⁹ select media stations and access navigation. Includes Apple CarPlay^{®2} support with your connected iPhone[®] and Android Auto.^{TM3} Standard.



CONNECTIONS

With Siri[®] Eyes Free¹⁰ and your connected iPhone[®], use voice commands to make calls, create and send texts,⁹ and more. GPS Navigation helps you travel the best routes. A 4G Wi-Fi Hotspot¹¹ (1GB or 3-month trial) connects with up to eight devices within 50 feet of your vehicle. Standard.

SIRIUSXM GUARDIAN^{TM7}

Enjoy a suite of safety and convenience features, including SOS Call,¹² lock/unlock or start your car¹³ from anywhere, and much more. 1-year trial. Standard.



SIRIUSXM TRAFFIC PLUS¹⁶

Avoid tie-ups, road closures and construction with continuous traffic updates. 5-year trial. Standard.



A LOT TO CONNECT WITH

The Uconnect system is your customizable, connected vehicle platform dedicated to safe and seamless communication, navigation and entertainment — all from one easy-to-use touchscreen. You're always connected with Uconnect, whether in your vehicle or via the Jeep App¹⁴ on your device, which allows you to lock and unlock your vehicle remotely.

SIRIUSXM TRAVEL LINK¹⁶

Get weather maps, forecasts and alerts, plus sports scores and schedules, fuel prices and more. 5-year trial. Standard.



START YOUR CAR FROM AFAR

Send destinations, lock the doors, check fuel status and more using the standard Jeep Skill for Amazon Alexa¹⁵ or the standard Jeep Action on Google on your voice assistant-enabled devices. Standard.



LEARN MORE ABOUT UCONNECT[®] AND RELATED SERVICES AT DRIVEUCONNECT.COM OR THE JEEP[®] APP¹⁴





POWERED UP PERFORMANCE

1.3L MULTIAIR®2 TURBO 4-CYLINDER ENGINE
Its direct fuel injection helps to deliver 177 hp and 210 lb-ft of torque to push the envelope of towing power while handing over welcome fuel efficiencies, with up to 32 hwy mpg¹⁷ on Sport FWD models (up to 27 hwy mpg¹⁸ with Trailhawk® model shown). Engine Stop / Start (ESS) Technology helps optimize fuel efficiency. Available active grille shutters open and close automatically to help control the flow of air, reducing drag and helping to maximize mpg performance. This turbo engine is standard on all models.

9-SPEED AUTOMATIC TRANSMISSION
Shifting gears with a precision that's as smooth as silk, these gears are fine-tuned with a ratio spread of 9.81 to ensure quick takeoffs and a consistently refined performance. Exceptional efficiencies are produced through all gears at all speeds. Standard.

FUN IN TOW

EXPAND YOUR OPTIONS by adding the available Trailer Tow Group and you're able to bring along a ton of toys, literally. The Class III hitch receiver and 4-pin wiring harness have a capacity to tow up to 2,000 lb. Available on Trailhawk® models.

177 HORSEPOWER

210 LB-FT OF TORQUE

UP TO 32 CITY / HWY MPG¹⁷
(MANUFACTURER'S ESTIMATE)



DREAM IT. **ACHIEVE IT.**

EFFICIENT AND ADVENTUROUS, Jeep® Renegade® grants you access to places others only dream of reaching. Jeep® Brand capability helps keep you moving forward whether fording¹⁹ through water and snow or traveling over tough terrain, while the efficiencies found in small SUVs help keep your budget in check so you can travel far and wide.



JEEP® RENEGADE® 4x4 SYSTEMS

JEEP® ACTIVE DRIVE Put your capability on automatic pilot. This available 4x4 system does the work for you, targeting exactly when you need a boost of traction. It features a single-speed Power Transfer Unit (PTU) that combines proven Jeep Brand capability with welcome efficiencies to deliver a double whammy of 4x4 prowess and efficiency. Jeep Active Drive can seamlessly transition from FWD to 4WD and back again, thanks to the system's smart rear-axle disconnect that operates in tandem with the available Selec-Terrain® Traction Management System's Auto mode. Under normal driving conditions, the front wheels provide most of the traction; however, should the front wheels start to lose grip, power automatically transfers to the rear wheel(s), so you seamlessly maintain optimal traction without having to take additional action.

JEEP ACTIVE DRIVE LOW This system gives Trailhawk its superpowers to easily conquer tough ridges, rocks and weather or the extra determination to pull a boat out of a lake. This one-speed system features Hill Descent Control that adds extra control over throttle, speed and braking, allowing you to smoothly travel down steep hills. Dial in to Rock mode when you need the boost of a 21:1 crawl ratio. Exclusive to Trailhawk.



GET TOUGH. PLAY HARD.

TRAIL RATED® Every Jeep® Brand vehicle bearing a Trail Rated® badge is designed and built to Go Anywhere, Do Anything® and to perform with exceptional 4x4 capability. Each must successfully pass tests in five performance categories: Traction, Articulation, Maneuverability, Ground Clearance and Water Fording!¹⁹ Standard on Trailhawk®.

Your Trail Rated Renegade® Trailhawk arrives hardwired with the hardware that includes the Jeep® Active Drive Low 4WD System and a set of skid plates that help protect your vehicle's most vulnerable parts when you're traveling over tough terrain. Rise to the greatest heights of on- and off-road mastery with Jeep Renegade. This renowned and capable SUV boasts an elite pedigree born of legendary strength and timeless style.

SELEC-TERRAIN® GRIPPING CAPABILITY

The Selec-Terrain® Traction Management System quickly tailors your traction control with the turn of a dial. In an instant, you've got the right amount of grip and capability for the type of terrain you're facing. By coordinating many vehicle systems, you're able to navigate the most challenging conditions with ease. Dial settings include Auto, Snow, Sand, Mud and, exclusive on Trailhawk®, Rock mode.



AUTO

In this mode, Selec-Terrain does all the work, automatically adjusting vehicle dynamics to best suit the road. To help ensure optimal efficiency, the rear driveline disengages when not needed.

SNOW

Adjusts for ultimate performance over snow- and ice-covered roads by maximizing vehicle stability and minimizing oversteer. Major systems auto-engaged and managed in this mode include antilock brakes and traction control.

SAND

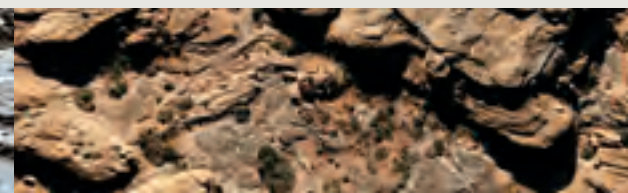
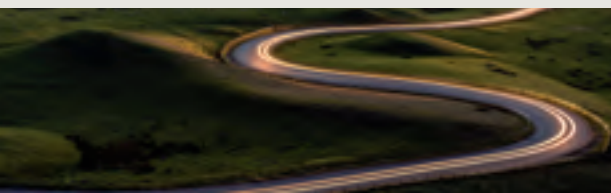
Converts to a uniquely calibrated Sand mode that utilizes an aggressive throttle and upshift points to tackle looser, sand-covered surfaces.

MUD

Maintains low-speed traction by allowing additional wheel-slip via specifically tuned chassis controls, differentials and transmission ratios that are geared to successfully tackle mud.

ROCK

Exclusive to Trailhawk, Rock mode delivers low-speed 4x4 capability, thanks to its rear-differential locking element. This allows Jeep® Renegade®, to command the world's most challenging terrain.



SAFETY & SECURITY

PEACE OF MIND

When it comes to standard features in safety and security, the benchmark is raised for Jeep® Renegade®. Every model arrives with Blind Spot Monitoring⁴ and Rear Cross-Path Detection⁵ Systems and LaneSense® Lane Departure Warning with Lane Keep Assist.⁶ With an array of available sensors keeping watch of your perimeter and a cabin engineered with seven standard air bags,²⁰ Renegade acts as your steadfast guardian when you're behind the wheel.

LANESENSE® LANE DEPARTURE WARNING WITH LANE KEEP ASSIST⁶ Provides a visual and audible warning and steering-wheel movement should the vehicle drift outside of lane boundaries or if the driver's hands are off the wheel. Standard.

FULL-SPEED FORWARD COLLISION WARNING WITH ACTIVE BRAKING²¹ Should you approach another vehicle too rapidly, you'll get audible and visual alerts and brake assistance if reaction time is too slow. Available.

ADAPTIVE CRUISE CONTROL²² Take the guesswork out of keeping a safe following distance from the car ahead while cruising on the highway. When activated, the system automatically adjusts cruising speed to maintain a preset distance between you and the vehicle ahead. Available.

AUTO HIGH-BEAM HEADLAMP CONTROL Sensors eliminate the need to manually turn off high beams when oncoming traffic approaches. Available.

ELECTRONIC STABILITY CONTROL (ESC)²³ A vehicle-wide network of safety sensors helps maintain vehicle control, providing instant aid should it detect you're veering off your intended path. ESC²³ coordinates Electronic Roll Mitigation (ERM), Antilock Brake System (ABS) and Advanced Brake Assist, All-Speed Traction Control and Trailer Sway Control (TSC),²⁴ sending them into action when needed. Standard.

PARALLEL AND PERPENDICULAR PARK AND UNPARK ASSIST SYSTEM²⁵ This active guidance system controls steering automatically. You can take your hands off the steering wheel and let the system's ultrasonic sensors help you ease into parking spots as you gently brake and change from Reverse to Drive as needed. Unpark Assist²⁵ helps you navigate your way out of parking spots. It controls the vehicle's steering while providing the driver with gear and braking instructions. Available.

PARKVIEW® REAR BACK-UP CAMERA WITH ACTIVE GRID LINES⁵ This system helps bring previously hidden rear objects to your attention on-screen in good time to react. Standard.

BLIND SPOT MONITORING⁴ AND REAR CROSS-PATH DETECTION⁵ SYSTEMS Maintain a safe perimeter with the help of these sensor systems. Chimes and illuminated icons notify you when side or rear blind spots are encroached. Standard.

KEYLESS ENTER 'N GO™ Simply keep your key fob in your pocket, grab the door handle and climb in. Once inside, start the engine by pressing the Start/Stop button while applying the brake, shift into gear and go. Available.

LED LIGHTING To provide you with the clearest visibility, LED lights and other features are gathered together into special luxury groups. You'll have a full complement of LED lights, including headlamps, daytime running lamps (DRLs), taillamps and fog lamps. Available.



SAFETY & SECURITY



A SECURE AIR BAG²⁰ SYSTEM Full-length front and rear side-curtain, driver inflatable knee bolster, seat-mounted side for front occupants, and advanced multistage driver and front-passenger air bags²⁰ all work together to help provide encompassing protection. Standard.

CHASSIS STRENGTH Maintain peace of mind with this strong safety cage, constructed with high-strength steel. Exceptional ride quality is experienced as well. Standard.

TRAILER SWAY CONTROL (TSC)²⁴ Crosswinds and traffic hold no sway over you and your payload. As part of Electronic Stability Control (ESC),²³ TSC²⁴ helps keep you and the toys you tow safely on course. Standard.

RAIN-SENSITIVE WINDSHIELD WIPERS Storm clouds hold little influence over your daily drive. Front wipers activate when raindrops are detected. Available.

WINDSHIELD WIPER DE-ICER Maintain a clear view of the road ahead during snowy weather. Heating elements on the lower inside windshield glass help keep wipers free from ice and the windshield clear for an unobstructed view of the road. Available.

2022 JEEP® RENEGADE®
BUYER'S GUIDE





LIMITED

JEEP® RENEGADE® LIMITED A full complement of standard comfort and convenience features sets Limited apart, beginning with a standard Uconnect® 4C NAV with a large 8.4-inch full-color touchscreen display dominating the dash. Smartphone integration is assured, thanks to Apple CarPlay®² support and Android Auto™³ compatibility. The leather-trimmed interior offers heated front seats and steering wheel for welcome warmth on cold winter days.



LIMITED

1

2

STANDARD

CAPABILITY

- 1.3L I-4 MultiAir®2 Turbo Direct-Injection engine with Engine Stop / Start (ESS) Technology and 9-speed automatic transmission with AutoStick
- Jeep® Active Drive full-time 4x4 system with disconnecting rear axle and Power Transfer Unit (PTU)
- Selec-Terrain® Traction Management System
- 4x4 drive system

EXTERIOR

- Matte Dark Chrome grille surround and Satin Chrome rings
- Black roof and roof rails
- Power-adjusting, heated, manual-folding exterior mirrors with turn signal in Gloss Black
- Matte Dark Chrome front and rear accents
- Bright exhaust tip
- Windshield wiper de-icer
- Rain-sensitive windshield wipers
- Cornering front fog lamps
- Automatic halogen headlamps with daytime running lamp (DRL) system
- Deep-tint sunscreen glass
- Tire Service Kit
- 215 / 60R17 BSW All-Season Touring tires
- Incandescent taillamps

INTERIOR

- All-season floor mats
- Front / rear power windows with front 1-touch up / down
- High-Gloss Grillz interior bezel accents
- Air conditioning with Dual-Zone Automatic Temperature Control and Jeep Air Filtration System
- 7-inch, full-color Driver Information Display
- Media Hub with USB port¹ and auxiliary input jack; 2nd USB port¹ located behind center console
- 115-volt and 12-volt auxiliary power outlets
- Ambient LED interior lighting
- Sun visors with illuminated mirrors
- Rearview auto-dimming mirror

STANDARD continued

INTERIOR continued

- Leather-wrapped, heated steering wheel with audio and cruise controls
- Leather-wrapped shift knob
- Heated front seats
- Power 8-way driver's seat with power 2-way lumbar adjust and manual 4-way front-passenger seat
- 40 / 20 / 40 split-folding rear seats with pass-through and 3 rear-seat head restraints
- Front floor console with sliding armrest, cup holders, storage slot and passenger-side storage net
- 6-speaker audio system
- Integrated Voice Command with Bluetooth®
- Uconnect® 4C NAV with 8.4-inch touchscreen display, GPS Navigation, HD radio, Apple CarPlay^{®2} support and Android Auto^{™3} compatibility, Bluetooth, SiriusXM Guardian^{™7} (1-year trial subscription), and SiriusXM® Traffic Plus¹⁶ and SiriusXM Travel Link¹⁶ (5-year trial subscriptions)
- SiriusXM Radio[®] (6-month trial subscription)

SAFETY & SECURITY

- 7 air bags;²⁰ including advanced multistage driver and front-passenger, full-length front and rear side-curtain, supplemental front-seat-mounted side, and driver's inflatable knee bolster
- All-Speed Traction Control
- Child Seat Anchor System, LATCH-ready
- ParkView® Rear Back-Up Camera⁵
- Premium Tire Pressure Monitoring Display with individual tire read-outs
- Keyless Enter 'n Go[™] with push-button start
- Electronic Stability Control²⁵ with Electronic Roll Mitigation, Hill Start Assist and Trailer Sway Control²⁴
- Antilock 4-wheel disc brakes
- Advanced Brake Assist
- Electric park brake
- Blind Spot Monitoring⁴ and Rear Cross-Path Detection⁵ Systems

STANDARD continued

SAFETY & SECURITY continued

- LaneSense® Lane Departure Warning with Lane Keep Assist⁶
- Full-Speed Forward Collision Warning with Active Braking²¹
- Remote Start System²⁶
- Security alarm²⁷

AVAILABLE

LIMITED LUXURY GROUP: Bi-function LED projector headlamps, LED taillamps, LED cornering fog lamps and LED DRLs, Auto High-Beam Headlamp Control, Adaptive Cruise Control²² and Parallel and Perpendicular Park and Unpark Assist System²⁵

MOPAR® INTERIOR PREMIUM PACKAGE, BLACK: Mopar® Premium Carpet Mats and Cargo Mat in Black plus Mopar Bright Pedal Kit (requires Black interior; not available with Mopar Interior Protection Package)

MOPAR EXTERIOR APPEARANCE GROUP: Mopar Chrome Front Air Deflector, Mopar Front and Rear Splash Guards, and Mopar Side Window Air Deflectors

MOPAR INTERIOR PROTECTION PACKAGE: Mopar All-Weather Floor Mats, Mopar Molded Cargo Tray and Mopar Bright Door Sill Guards

MOPAR DECALS: Mopar Renegade® Snowboard Decal available in all exterior colors except Alpine White, and Mopar Renegade BMX Decals available in all exterior colors except Black

SUN, SOUND AND WHEEL GROUP: Dual-Pane Panoramic Power Sunroof, 9-speaker Premium Audio System with subwoofer and 19-inch Diamond-Cut aluminum wheels

INTERIORS

- 1) McKinley Leather trim with Ski Grey accent stitching: Black (standard)
- 2) McKinley Leather trim with tonal accent stitching: Black / Ski Grey (standard)

WHEELS

- 1) 18-inch painted aluminum (standard)
- 2) 19-inch Diamond-Cut aluminum (available with Sun, Sound and Wheel Group)





JEEP® RENEGADE® TRAILHAWK® This purpose-built hill-climber is backed by the standard, Trail Rated® Jeep® Active Drive Low 4x4 System. Confidence is added with standard safety and security systems that include Blind Spot Monitoring⁴ and Rear Cross-Path Detection⁵ Systems and LaneSense® Lane Departure Warning with Lane Keep Assist.⁶ The Remote Start System²⁶ and Keyless Enter 'n Go™ get you going quickly, and a uniquely styled cabin boasts Ruby Red bezel accents within a spacious, configurable interior with 40/20/40 split-folding rear seats that allow you to tailor your cargo area to fit the needs of every trip.





STANDARD

CAPABILITY

- 1.3L I-4 MultiAir®2 Turbo Direct-Injection engine with Engine Stop / Start (ESS) Technology and 9-speed automatic transmission with AutoStick
- Jeep® Active Drive Low full-time 4x4 system with disconnecting rear axle and low-range 21:1 crawl ratio
- Selec-Terrain® Traction Management System, including Rock mode
- Hill Descent Control
- Off-road suspension

EXTERIOR

- 0.8-inch increased ride height
- Skid plates for fuel tank, transmission, transfer case and suspension
- Front and rear Signature Ruby Red tow hooks
- Badging, side mirrors and grille rings in Neutral Gray
- Black roof and roof rails
- Unique Trailhawk® and Trail Rated® badging in Signature Ruby Red
- Hood decal in Low-Gloss Black
- Unique front and rear fascias with Black grille surround
- Rain-sensitive windshield wipers
- Power-adjusting, heated, manual-folding exterior mirrors with turn signals in Gloss Black
- Full-size spare tire
- Automatic halogen headlamps with daytime running lamp (DRL) system
- Cornering front fog lamps
- Deep-tint sunscreen glass
- 215 / 65R17 BSW All-Season On- / Off-road tires
- Windshield wiper de-icer
- Incandescent taillamps

STANDARD continued

INTERIOR

- Anodized Ruby Red interior bezel accents
- 7-inch, full-color Driver Information Display
- 115-volt and 12-volt auxiliary power outlets
- Leather-wrapped shift knob
- All-weather front / rear floor mats
- Air conditioning with Dual-Zone Automatic Temperature Control and Jeep Air Filtration System
- Ambient LED interior lighting
- Media Hub with USB port¹ and auxiliary input jack; 2nd USB port¹ located behind center console
- Sun visors with illuminated mirrors
- Leather-wrapped, heated steering wheel with audio and cruise controls and Gloss Black bezels
- Power 8-way driver's seat with power 2-way lumbar adjust and front-passenger manual 4-way adjust
- 40 / 20 / 40 split-folding rear seats with pass-through and 3 rear-seat head restraints
- Front floor console with sliding armrest, cup holders, storage slot and passenger-side storage net
- 6-speaker audio system
- Uconnect® 4C NAV with 8.4-inch touchscreen display, GPS Navigation, HD radio, Apple CarPlay®⁸² support and Android Auto™⁸⁵ compatibility, Bluetooth®, SiriusXM Guardian™⁸⁷ (1-year trial subscription), and SiriusXM® Traffic Plus⁸⁶ and SiriusXM Travel Link⁸⁶ (5-year trial subscriptions)
- Integrated Voice Command with Bluetooth
- SiriusXM Radio⁸⁸ (6-month trial subscription)
- Rearview auto-dimming mirror

STANDARD continued

SAFETY & SECURITY

- 7 air bags;²⁰ including advanced multistage driver and front-passenger, full-length front and rear side-curtain, supplemental front-seat-mounted side, and driver's inflatable knee bolster
- All-Speed Traction Control
- Child Seat Anchor System, LATCH-ready
- Electric park brake
- Antilock 4-wheel disc brakes
- Advanced Brake Assist
- Electronic Stability Control²³ with Electronic Roll Mitigation, Hill Start Assist and Trailer Sway Control²⁴
- ParkView® Rear Back-Up Camera⁵
- Keyless Enter 'n Go™ with push-button start
- Premium Tire Pressure Monitoring Display with individual tire read-outs
- Blind Spot Monitoring⁴ and Rear Cross-Path Detection⁵ Systems
- LaneSense® Lane Departure Warning with Lane Keep Assist⁶
- Remote Start System²⁶
- Security alarm²⁷

AVAILABLE

TRAILER TOW GROUP: Class III hitch receiver plus 4-pin wiring harness

TRAILHAWK® LUXURY GROUP: Bi-function LED projector headlamps, LED taillamps, LED cornering fog lamps, LED DRLs and premium leather-trimmed seats

MOPAR® EXTERIOR APPEARANCE GROUP: Mopar® Chrome Front Air Deflector, Mopar Front and Rear Splash Guards, and Mopar Side Window Air Deflectors

SUN AND SOUND GROUP: Dual-Pane Panoramic Power Sunroof and 9-speaker Premium Audio System with subwoofer

INTERIORS

- 1) Washington and Matric Topographic Cloth with Ruby Red accent stitching and embroidered Trailhawk logo: Black (standard)
- 2) McKinley Leather trim with Ruby Red accent stitching and embroidered Trailhawk logo: Black (available)

WHEEL

- 1) 17-inch aluminum polished and painted Low-Gloss Black (standard)





JEEP® RENEGADE® LATITUDE With its deep-tint sunscreen glass, distinctive seven-slot grille, roof rails, body-color mirrors and door handles, plus bold 17-inch aluminum wheels, Latitude is ready-made to capture attention on the urban playing field. Ambient LED interior lighting, a large 7-inch Driver Information Display (DID), premium bucket cloth seats and unique High-Gloss Grillz interior accents amp up its attitude. The available Premium Audio System with nine speakers delivers a prime audio experience.





STANDARD

CAPABILITY

- 1.3L I-4 MultiAir^{®2} Turbo Direct-Injection engine with Engine Stop / Start (ESS) Technology and 9-speed automatic transmission with AutoStick
- Jeep[®] Active Drive full-time 4x4 system (4x4 models)
- Selec-Terrain[®] Traction Management System (4x4 models)
- 4x4 drive system

EXTERIOR

- Black grille surround and Bright rings
- Automatic halogen headlamps with daytime running lamp (DRL) system
- Cornering front fog lamps
- Black roof rails
- Power-adjusting, heated, manual-folding exterior mirrors in Black
- Body-color door handles
- Deep-tint sunscreen glass
- Tire Service Kit
- 215 / 60R17 BSW All-Season Touring tires
- Incandescent taillamps

INTERIOR

- All-season floor mats
- Push-button start
- Air conditioning with Dual-Zone Automatic Temperature Control and Jeep Air Filtration System
- High-Gloss Grillz interior bezel accents
- Ambient LED interior lighting
- Premium-wrapped steering wheel with audio and cruise controls
- 12-volt auxiliary power outlet
- 7-inch, full-color Driver Information Display
- Manual 6-way driver's seat and 4-way front-passenger seat, including driver's height-adjustable seat
- 60 / 40 split-folding rear seats with 3 head restraints

STANDARD continued

INTERIOR continued

- Front floor console with sliding armrest, cup holders, storage slot and passenger-side storage net
- Media Hub with USB port¹ and auxiliary input jack; 2nd USB port¹ located behind center console
- 6-speaker audio system
- Uconnect[®] 4C NAV with 8.4-inch touchscreen display, GPS Navigation, HD radio, Apple CarPlay^{®2} support and Android Auto^{™3} compatibility, Bluetooth[®], SiriusXM Guardian^{™7} (1-year trial subscription), and SiriusXM[®] Traffic Plus¹⁶ and SiriusXM Travel Link¹⁶ (5-year trial subscriptions)
- Integrated Voice Command with Bluetooth
- SiriusXM Radio⁸ (6-month trial subscription)

SAFETY & SECURITY

- 7 air bags²⁰ including advanced multistage driver and front-passenger, full-length front and rear side-curtain, supplemental front-seat-mounted side, and driver's inflatable knee bolster
- ParkView[®] Rear Back-Up Camera⁵
- Electronic Stability Control¹²³ with Electronic Roll Mitigation, Hill Start Assist and Trailer Sway Control²⁴
- Antilock 4-wheel disc brakes
- All-Speed Traction Control
- Child Seat Anchor System, LATCH-ready
- Advanced Brake Assist
- Premium Tire Pressure Monitoring Display with individual tire read-outs
- Blind Spot Monitoring⁴ and Rear Cross-Path Detection⁵ Systems
- LaneSense[®] Lane Departure Warning with Lane Keep Assist⁶
- Full-Speed Forward Collision Warning with Active Braking²¹
- Security alarm²⁷
- Keyless Enter 'n Go[™] with push-button start
- Remote Start System²⁶

AVAILABLE

CONVENIENCE GROUP: Power 8-way driver's seat with power 2-way lumbar adjust and manual 4-way front-passenger seat, 40 / 20 / 40 split-folding rear seats with pass-through, rearview auto-dimming mirror and 115-volt auxiliary power outlet, windshield wiper de-icer, heated steering wheel, rain-sensitive windshield wipers and heated front seats (not available with Mopar[®] Interior Premium Package or Mopar Interior Protection Package)

MOPAR[®] INTERIOR PREMIUM PACKAGE, BLACK: Mopar Premium Carpet Mats and Cargo Mat in Black plus Mopar Bright Pedal Kit (not available with Mopar Interior Protection Package)

MOPAR EXTERIOR APPEARANCE GROUP: Mopar Chrome Front Air Deflector, Mopar Front and Rear Splash Guards, and Mopar Side Window Air Deflectors

MOPAR INTERIOR PROTECTION PACKAGE: Mopar All-Weather Floor Mats, Mopar Molded Cargo Tray and Mopar Bright Door Sill Guards

MOPAR DECALS: Mopar Renegade[®] Snowboard Decal available in all exterior colors except Alpine White, and Mopar Renegade BMX Decals available in all exterior colors except Black

SUN AND SOUND GROUP: Dual-Pane Panoramic Power Sunroof and 9-speaker Premium Audio System with subwoofer

INTERIORS

- 1) Washington and Cappellini-embossed Cloth with tonal accent stitching: Black (standard)
- 2) Washington and Cappellini-embossed Cloth with Iced Blue accent stitching: Black / Ski Grey (standard)

WHEEL

- 1) 17-inch aluminum painted Fine Silver (standard)





SPORT

JEEP® RENEGADE® SPORT Here's where you'll start having more fun out in the world. Renegade® Sport opens the door to Jeep® Brand capability, handing over all the confidence to go where others only dream of reaching. You'll be backed up with more standard safety features than ever before, including Blind Spot Monitoring⁴ and Rear Cross-Path Detection⁵ Systems, Full-Speed Forward Collision Warning with Active Braking²¹ and LaneSense® Lane Departure Warning with Lane Keep Assist.⁶



SPORT

1

STANDARD

CAPABILITY

- 1.3L I-4 MultiAir[®]2 Turbo Direct-Injection engine with Engine Stop / Start (ESS) Technology and 9-speed automatic transmission with AutoStick
- Jeep[®] Active Drive full-time 4x4 system with disconnecting rear axle and Power Transfer Unit (PTU) (4x4 models)
- Selec-Terrain[®] Traction Management System (4x4 models)

EXTERIOR

- Black grille surround and Bright rings
- Power-adjusting, heated, manual-folding exterior mirrors in Black
- Body-color door handles
- Halogen headlamps with daytime running lamp (DRL) system
- Front / rear power windows with front 1-touch up / down
- 215 / 65R16 All-Season tires
- Tire Service Kit
- Incandescent taillamps
- Solar-Control glass

INTERIOR

- Cruise control
- Push-button start
- Air conditioning with Dual-Zone Automatic Temperature Control and Jeep Air Filtration System
- High-Gloss Grillz interior bezel accents
- 3.5-inch monochrome Driver Information Display
- Media Hub with USB port¹ and auxiliary input jack
- 12-volt auxiliary power outlet
- Urethane steering wheel with audio and cruise controls
- Speed-sensitive power door locks
- Manual 6-way driver's seat and 4-way front-passenger seat, including driver's height-adjustable seat
- Fold-forward front-passenger seat
- 60 / 40 split-folding rear seats with 3 head restraints
- Front floor console with sliding armrest and cup holders, storage slot and passenger-side storage net

STANDARD continued

INTERIOR continued

- All-season floor mats
- Height-adjustable cargo load floor
- Urethane shift knob
- Driver and front-passenger sun visors with mirror
- Driver and passenger assist handles
- Locking glove box with lamp
- Cargo tie-down loops
- 6-speaker audio system
- Uconnect[®] 4C NAV with 8.4-inch touchscreen display, GPS Navigation, HD radio, Apple CarPlay[®]2 support and Android Auto[™]5 compatibility, Bluetooth[®], SiriusXM Guardian[™]7 (1-year trial subscription), and SiriusXM[®] Traffic Plus¹⁶ and SiriusXM Travel Link¹⁶ (5-year trial subscriptions)
- Integrated Voice Command with Bluetooth
- SiriusXM Radio⁸ (6-month trial subscription)

SAFETY & SECURITY

- 7 air bags²⁰, including advanced multistage driver and front-passenger, full-length front and rear side-curtain, supplemental front-seat-mounted side, and driver's inflatable knee bolster
- All-Speed Traction Control
- Electronic Stability Control²³ with Electronic Roll Mitigation, Hill Start Assist and Trailer Sway Control²⁴
- Antilock 4-wheel disc brakes
- Electric park brake
- Premium Tire Pressure Monitoring Display with individual tire read-outs
- Advanced Brake Assist
- ParkView[®] Rear Back-Up Camera⁵
- Child Seat Anchor System, LATCH-ready
- Center rear 3-point seat belt
- Battery-rundown protection
- Blind Spot Monitoring⁴ and Rear Cross-Path Detection⁵ Systems
- LaneSense[®] Lane Departure Warning with Lane Keep Assist⁶
- Full-Speed Forward Collision Warning with Active Braking²¹

AVAILABLE

MOPAR[®] INTERIOR PREMIUM PACKAGE, BLACK: Mopar[®] Premium Carpet Mats and Cargo Mat in Black plus Mopar Bright Pedal Kit (not available with Mopar Interior Protection Package)

MOPAR EXTERIOR APPEARANCE GROUP: Mopar Chrome Front Air Deflector, Mopar Front and Rear Splash Guards, and Mopar Side Window Air Deflectors

MOPAR INTERIOR PROTECTION PACKAGE: Mopar All-Weather Floor Mats, Mopar Molded Cargo Tray and Mopar Bright Door Sill Guards

MOPAR DECALS: Mopar Renegade[®] Snowboard Decal available in all exterior colors except Alpine White, and Mopar Renegade BMX Decals available in all exterior colors except Black

SPORT APPEARANCE GROUP: Black roof rails, deep-tint sunscreen glass and 17-inch aluminum wheels

INTERIOR

- 1) Washington and Mesh Cloth with tonal accent stitching: Black (standard)

WHEELS

- 1) 16-inch Black Styled steel (standard)
- 2) 17-inch aluminum (available with Sport Appearance Group)



2022 Jeep® Renegade® (RED) Edition



Looking every part the hero, Renegade® (RED) Edition arrives with standard features designed to connect you with style and high tech. Plus, your adventures driving (RED) Edition put you on a special path, joining a global community to fight AIDS and help end the COVID-19 pandemic. (RED) partners with the world's most iconic brands that contribute portions of profits from the sale of (RED) -branded products and experiences to the Global Fund.

Includes Latitude content plus:

- Available in Colorado Red, Alpine White, Black and Sting-Gray Exterior Paint Colors
- 19-inch Granite-Painted Aluminum Wheels
- Colorado Red Jeep®, 4x4 and Renegade Badges
- Ruby Red Front and Rear Door Speaker Bezels and Instrument-Panel Outer Vent Bezels
- Gloss Black Shifter and Center Console Bezels
- Unique (Willys) Decal Badge in White
- Ruby Red Accent Stitching on Steering Wheel, Center Console Lid and Shifter Boot



INTERIOR

Washington and Quick Space Cloth with tonal accent stitching: Black



WHEEL

19-inch Granite-painted aluminum



2022 JEEP® RENEGADE® ALTITUDE

YOUR QUEST FOR FREEDOM CAN BE REALIZED IN A JEEP® RENEGADE® THAT'S AS UNIQUE AS YOU ARE. THIS SPECIAL EDITION OFFERS A COMBINATION OF LUXURIOUS INTERIOR FEATURES AND FINESSED EXTERIOR STYLE, ALL BACKED BY AUTHENTIC CAPABILITY.



ALTITUDE

Includes Latitude content plus:

- 18-inch Gloss Black Aluminum Wheels with 225/55R18 All-Season Tires
- Gloss Black Badging, Grille Rings and Taillamp Bezels
- Gloss Black Exterior Mirrors with Turn Signals
- Black Headliner
- Deluxe Cloth High-Back Bucket Seats in Black with Black Accent Stitching
- Gloss Black Interior Accents
- Vinyl Door Trim Panel
- Leather-Wrapped Steering Wheel with Gloss Black Bezels

SPECIFICATIONS

EXTERIOR DIMENSIONS

(inches unless otherwise noted)

Wheelbase	101.2
Overall Length	166.6
Overall Width (with open side mirrors)	79.6
Track (front / rear)	60.6 / 60.6
Overall Height	66.5

	4x2 / 4x4 / Trailhawk®
Ground Clearance	6.7 / 8.0 / 8.7
Approach Angle (deg)	17.9 / 21.0 / 30.5
Breakover Angle (deg)	21.2 / 24.0 / 25.7
Departure Angle (deg)	29.7 / 32.1 / 34.3
Water Fording Depth ⁹	N/A / 12.0 / 19.0

INTERIOR DIMENSIONS

(inches unless otherwise noted)

	Front / Rear
Seating Capacity	2 / 3 adults
Head Room (without sunroof)	41.1 / 40.5
Head Room (with sunroof)	39.7 / 40.5
Leg Room	41.2 / 35.1
Shoulder Room	55.9 / 55.1
Hip Room	53.1 / 51.9
SAE Cargo Volume (cu ft): rear seat up	18.5
rear seat folded	50.8
EPA Interior Volume Index (cu ft)	118.6

BRAKE SYSTEM — Antilock Brake System (ABS)

Front: 12 x 1.1-in vented rotor with 2.36-in single-piston floating caliper

Rear: 10.95 x 0.47-in solid rotor with 1.5-in single-piston floating caliper

BODY DESIGN — Steel uniframe construction: upper body and frame members welded and bonded into a single unit

SUSPENSION — Front: MacPherson struts, coil springs, flat-front steel crossmember, high-strength steel double-shell lower control arms for 4x4 and high-strength steel mono-shell lower control arms for 4x2 and stabilizer bar. Rear: Chapman struts, high-strength steel links, isolated steel rear cradle for 4x4 and not isolated for 4x2, coil springs and stabilizer bar

STEERING — Electric power rack and pinion

Overall ratio	15.7:1
Turns (lock-to-lock): 4x2 and 4x4	2.68
Trailhawk	2.76

Turning diameter (curb-to-curb; ft):

4x2 and 4x4	36.3
Trailhawk	35.3

CAPACITIES / WEIGHTS

(lb unless otherwise noted)

Fuel Tank (gal)	12.7
Base Curb Weight	
1.3L 4x2	3,161
1.3L 4x4	3,320
1.3L 4x4 Trailhawk	3,527
Towing Capacity (when properly equipped; Trailhawk models only)	2,000

POWERTRAINS

Engine	1.3L MultiAir®2 Turbo I-4
Displacement (cc)	1,332
Horsepower (SAE @ rpm)	177 @ 5,750
Torque (SAE net lb-ft @ rpm)	210 @ 1,750
Axle Ratio	4.585 (Trailhawk)
Fuel Injection System	Direct injection
2022 Manufacturer's-Estimated Highway MPG	32 ¹¹



EXTERIOR COLORS



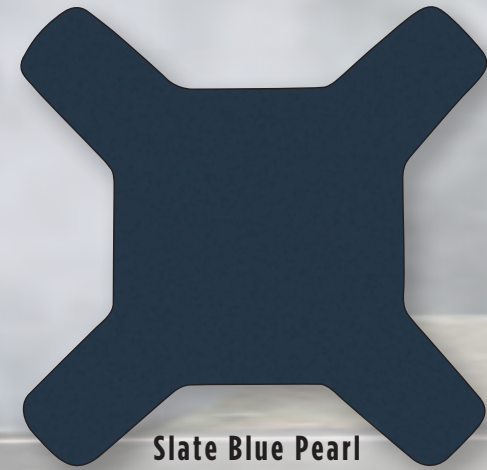
Colorado Red



Alpine White



Sting-Gray



Slate Blue Pearl



Black



Graphite Grey



Bikini Metallic



AUTHENTIC JEEP® BRAND VEHICLE ACCESSORIES

When it comes to your Jeep® Renegade®, not all parts and accessories are created equal. As the official service, parts and customer care provider for the Jeep® Brand, only Mopar® Parts and Accessories can ensure the proper fit, finish and functionality. That's because they're original equipment, engineered by the same people who designed your vehicle, which means you can personalize your ride with complete confidence.

Mopar is also more than parts and accessories. We're here to help you properly maintain and care for your vehicle. Our certified technicians are trained to know your vehicle best, and our Mopar Express Lane service departments are set up to get you in, out and back on the road. From parts and accessories to expert service and more, always be sure to choose Mopar. Learn more at [mopar.com](https://www.mopar.com)



Vehicle above shown with Authentic Jeep® Brand Vehicle Accessories by Mopar®, including Roof Rack Crossbars, Ski and Snowboard Carrier, and Rock Rails
Properly secure all cargo



Cargo Tote



Splash Guards



Bright Pedal Kit



All-Weather Floor Mats



EXCLUSIVE BENEFITS FOR EVERY JEEP® RENEGADE® OWNER

All 2022 Jeep® Renegade® vehicles are automatically enrolled in the Jeep Wave® Customer Care Program. It's a program designed to provide Jeep® Brand vehicle owners with dedicated 24/7 owner support and a special package of benefits designed to enhance their ownership experience and thank them for their patronage. Visit [JEEP.COM/WAVE](https://www.jeep.com/wave) for more details.



NO-ADDITIONAL-CHARGE, WORRY-FREE MAINTENANCE²⁸



CONFIDENCE WITH VEHICLE PROTECTION



DEDICATED 24/7 OWNER SUPPORT



VIP ACCESS TO JEEP® BRAND EVENTS



NO-CHARGE, SAME-DAY RENTAL COVERAGE²⁹



OWNER SUPPORT

THE JEEP® BRAND
IS PROUD TO OFFER SOME
OF THE BEST OWNERSHIP
SUPPORT PROGRAMS
AVAILABLE ANYWHERE



5 YEAR / 60,000 MILE
POWERTRAIN LIMITED WARRANTY

WARRANTIES Jeep® Brand vehicles are covered by a 3-Year / 36,000-Mile Basic Limited Warranty³⁰ (excludes normal maintenance and wear items), as well as a 5-Year / 60,000-Mile Powertrain Limited Warranty³¹ that is fully transferable. See your dealer for complete details and a copy of the 5-Year / 60,000-Mile Powertrain Limited Warranty.³¹



**VEHICLE
PROTECTION**

MOPAR® VEHICLE PROTECTION PLANS

A variety of Protection Plans accepted at all FCA US LLC dealerships have been designed to meet the needs of your unique lifestyle on the road. We stand behind every extended protection plan with certified, factory-trained technicians and the use of original equipment parts. Ask for a Mopar® Vehicle Protection Plan at your dealership, call (800) 442-2666 or visit mopar.com



DRIVEABILITY | FCA

DRIVEABILITY PROGRAM The FCA US LLC DriveAbility Program provides aftermarket reimbursement incentives on adaptive vehicle upfit equipment to help provide safe and reliable vehicle modifications, enhancing accessibility for all people. For more information, call (800) 255-9877 or visit fcausdriveability.com

MOPAR® OWNER'S SITE & COMPANION APP Get all of the resources you need to make owning your Jeep® Brand vehicle the best experience possible. Schedule service directly with your preferred dealer, create a custom online dashboard tailored to you and your vehicle, and access personalized resources, including your Owner's Manual, Vehicle Health Report, special offers and more — anytime, anywhere. Register your vehicle at mopar.com or download the Mopar® Owner's Companion App today.



JEEP® DRIVEPLUS™ MASTERCARD®

Apply today for a Jeep® DrivePlus™ Mastercard® and, upon approval, start earning 5% cash back on Jeep dealership purchases, 2% cash back on gas and travel purchases, and 1% cash back on purchases everywhere else.³² Redeem your rewards toward your next service or your next Jeep purchase. Go to drivepluscard.com or visit a participating dealer to learn more.

EXPANDED HORIZONS

DELVE DEEPER INTO THE JEEP® LIFE WITH AN EXPANSIVE ARRAY OF SOCIAL MEDIA, SHOPPING, OWNER RESOURCES AND ONE-OF-A-KIND EVENTS. START YOUR ADVENTURE TODAY AT JEEP.COM



SOCIAL ADVENTURES Expand your horizons to include authentic and active Jeep® Brand online communities. Post stories, share photos, watch videos and get the latest news from Jeep Brand gearheads and engineers on Facebook, Instagram, Twitter and YouTube. Tune in and get out into the virtual world, where thrilling adventures are happening every single day.

facebook.com/Jeep

instagram.com/Jeepofficial

twitter.com/Jeep

youtube.com/TheJeepChannel

JEEP® BADGE OF HONOR Experience an online community that invites off-road fans to sign up, download the app and check in to legendary off-road trails across the U.S. — earmarked by the Jeep® Badge of Honor. Members can discover special trails and maps, earn Trail Points and ranks within the community, share photos and learn more about Jeep Trail Ratings. Connect with fellow Jeep Brand vehicle owners and like-minded friends at jeep.com/badge-of-honor

JEEP® JAMBOREES For those with an adventurous spirit, join us on the trail. Head for parts unknown or return to fun, familiar places. Jeep® Jamboree USA offers off-road adventure weekends that bring together the outdoors, down-to-earth people and their Jeep Brand 4x4 vehicles. Explore America's backcountry at jeepjamboreeusa.com

JEEP® GEAR Uncover an extensive line of fun, developed exclusively for Jeep® Brand enthusiasts. From authentic wearables to unique gifts, all items are as rugged and durable as your Jeep Brand vehicle. Express your true nature. Learn more at jeep.com/gear

JEEP® AMAZON STORE Browse an ever-changing collection of unique Jeep® Brand merchandise with your favorite shopping experience at Amazon.com, including items eligible for Amazon Prime. Start exploring at amazon.com/jeepstore



AN
UNSTOPPABLE
REBEL



ADVENTURE AWAITS

BUILD YOURS >



(1) For supported file formats, refer to the USB Port section of the Owner's Manual or DVD. (2) Requires compatible iPhone. See dealer for phone compatibility. Data plan rates apply. Vehicle user interface is a product of Apple. Apple CarPlay is a trademark of Apple Inc. iPhone is a trademark of Apple Inc., registered in the US and other countries. Apple terms of use and privacy statements apply. (3) To use Android Auto on your car display, you'll need an Android phone running Android 6 or higher, an active data plan and the Android Auto App. (4) Always check visually for vehicles prior to changing lanes. (5) Always check entire surroundings visually before proceeding. (6) This system is a driver convenience system, not a substitute for active driver involvement. The driver must remain aware of traffic conditions and maintain control of the vehicle. (7) All SiriusXM Guardian equipped vehicles come with a 12-month complimentary trial effective on the date of purchase or lease of a new vehicle. Enrollment in the trial is required to receive service. Upon expiration of the trial period, a subscription is required to continue SiriusXM Guardian. SiriusXM Guardian is available only on equipped vehicles purchased within the United States and Puerto Rico. Services can only be used where cellular coverage is available. See Uconnect and SiriusXM Guardian Terms of Service for complete service limitations. (8) Your service will automatically stop at the end of your trial subscription unless you decide to continue service. If you do not wish to enjoy your trial subscription, you can cancel it by calling the number below. **If you decide to continue service after your trial period included with the new vehicle purchase, the subscription plan you choose will automatically renew thereafter and you will be charged according to your chosen payment method at then-current rates.** Trial service is not transferable. Fees and taxes apply. Please see the Customer Agreement at www.siriusxm.com for complete terms and how to cancel, which includes calling SiriusXM at 1-866-539-7474. All fees and programming are subject to change. Not all vehicles or devices are capable of receiving all services offered by SiriusXM. Data displays and individual product availability vary by vehicle hardware. (9) Voice Text Reply feature requires a compatible mobile device that supports text messaging and Bluetooth. Visit www.UconnectPhone.com for system and device compatibility. (10) Requires an iPhone with Siri. Certain features are not available while the vehicle is in motion. iPhone must be within active cellular range. Customer's existing iPhone data rates apply to Internet-supported features. (11) Three-month / 1GB trial included with the purchase or lease of a new vehicle. Upon expiration of the trial period, purchase of a subscription is required. Wi-Fi Hotspot available through third-party subscription. Requires Internet-enabled mobile device. See dealer for details. This feature is not intended for use by the driver while the vehicle is in motion. Always drive carefully. (12) In the event of a medical or other emergency, press the SOS button to be connected to a Customer Care agent who can direct emergency assistance to your vehicle's GPS location. (13) Remote Vehicle Start not available on all vehicles. You are responsible for using remote features in accordance with any laws, rules or ordinances in effect in your vehicle's location. You must have an active subscription to SiriusXM Guardian in order to use remote services. See Terms of Service for service limitations. (14) You are responsible for using remote features in accordance with any laws, rules or ordinances in effect in your vehicle's location. You must have an active subscription to SiriusXM Guardian in order to use remote services. See Terms of Service for service limitations. (15) Compatible with properly equipped Uconnect systems on eligible vehicles. Requires registration of vehicle to SiriusXM Guardian connected services and fulfillment of minimum subscription requirements. Amazon, Alexa, and all related logos and marks are trademarks of Amazon.com, Inc. or its affiliates. (16) Not all vehicles or devices are capable of receiving all services offered by SiriusXM. Data displays and individual product availability vary by vehicle hardware. Current information and features may not be available in all locations, or on all receivers. Weather Forecast, Current Conditions may not be available in all locations. (17) Based on manufacturer's-estimated 24 city / 32 hwy mpg when equipped with 1.3L engine and 9-speed automatic transmission, FWD. Actual mileage may vary. (18) Based on manufacturer's-estimated 22 city / 27 hwy mpg when equipped with 1.3L engine and 9-speed automatic transmission, Trailhawk 4x4. Actual mileage may vary. (19) Do not attempt water fording unless depth is known and consistent with the vehicle's water fording rating in the Owner's Manual. Traversing water can cause damage that may not be covered by the new vehicle warranty. Always off-road responsibly in approved areas. (20) Always sit properly in designated seating positions with seat belts securely fastened at all times. (21) This system is an alert system for the front of the vehicle. It is not a substitute for active driver involvement. The driver must remain aware of traffic conditions and be prepared to use the brakes to avoid collisions. (22) This system is a driver convenience system, not a substitute for active driver involvement. The driver must remain aware of traffic conditions and be prepared to use the brakes to avoid collisions. (23) Always drive carefully, consistent with conditions. Always wear your seat belt and obey traffic laws. (24) Always drive carefully, consistent with conditions. Always wear your seat belt and obey traffic laws. (25) Always look before proceeding. An electronic drive aid is not a substitute for conscientious driving. Always be aware of your surroundings. (26) Check state and local laws regarding the use of remote start systems. (27) Vehicle must be locked and system activated for alarm to sound. (28) Non-luxury brands. Excludes other FCA US LLC brands. (29) Rental allowance (not to exceed \$35) is only for same-day mechanical repair or maintenance service (excluding bodywork). Vehicles kept overnight are not eligible. (30) Visit Mopar.com for complete details and a copy of the Basic Limited Warranty. (31) Visit Mopar.com for complete details and a copy of the Powertrain Limited Warranty. (32) See the Reward Terms and Conditions in the Summary of Credit Terms provided at time of application for details, including earning, redemption, expiration or forfeiture. Percentage back is earned as points.

©2021 FCA US LLC. All Rights Reserved. Jeep, Mopar, Altitude, Badge of Honor, Go Anywhere, Do Anything, the Jeep grille, Jeep Wave, the Jeep Wave Equipped design, LaneSense, Latitude, Mopar Vehicle Protection, ParkView, Renegade, Selec-Terrain, Trailhawk, Trail Rated, the Trail Rated 4x4 design, Uconnect and Willys are registered trademarks and DriveAbility and the DriveAbility design, Jeep Active Drive, Jeep Active Drive Low and Keyless Enter 'n Go are trademarks of FCA US LLC.

MultiAir is a registered trademark of C.R.F. Società Consortile per Azioni, used under license by FCA US LLC. Apple, iPhone and Siri are registered trademarks and Apple CarPlay is a trademark of Apple Inc. Bluetooth is a registered trademark of Bluetooth SIG, Inc. Facebook and Logo are registered trademarks of Facebook, Inc. Google, Android, Android Auto, YouTube and other marks are trademarks of Google LLC. Instagram is a registered trademark of Instagram, Inc. Cards are issued by First National Bank of Omaha (FNBO®), pursuant to a license from Mastercard International Incorporated. Mastercard is a registered trademark, and the circles design is a trademark of Mastercard International Incorporated. SiriusXM Connected Vehicles Services Inc., Sirius, XM, SiriusXM, SiriusXM Guardian, and all related marks and logos are registered trademarks of SiriusXM Radio Inc. The Twitter name, logo, Twitter T, Tweet and Twitter bird are service marks of Twitter, Inc. in the United States and other countries.

This brochure is a publication of FCA US LLC. All product illustrations and specifications are based upon current competitive information at the time of publication approval. FCA US LLC reserves the right to make changes from time to time, without notice or obligation, in prices, specifications, colors and materials, and to change or discontinue models which are considered necessary to the purpose of product improvement or for reasons of design and / or marketing.

Jeep®

THERE'S ONLY ONE

JEEP.COM

Jeep is a registered trademark of FCA US LLC.

(800) 925-JEEP

74-383-2203